

Farewell, Lass

# Coffee Shop Designed for Women

**Location** / Jiaxing, Zhejiang Province, China  
**Area** / 4844 square feet(450 square meters)  
**Designer** / PUJU  
**Client** / <to come>  
**Completion** / 2017  
**Photography** / Susan Tan

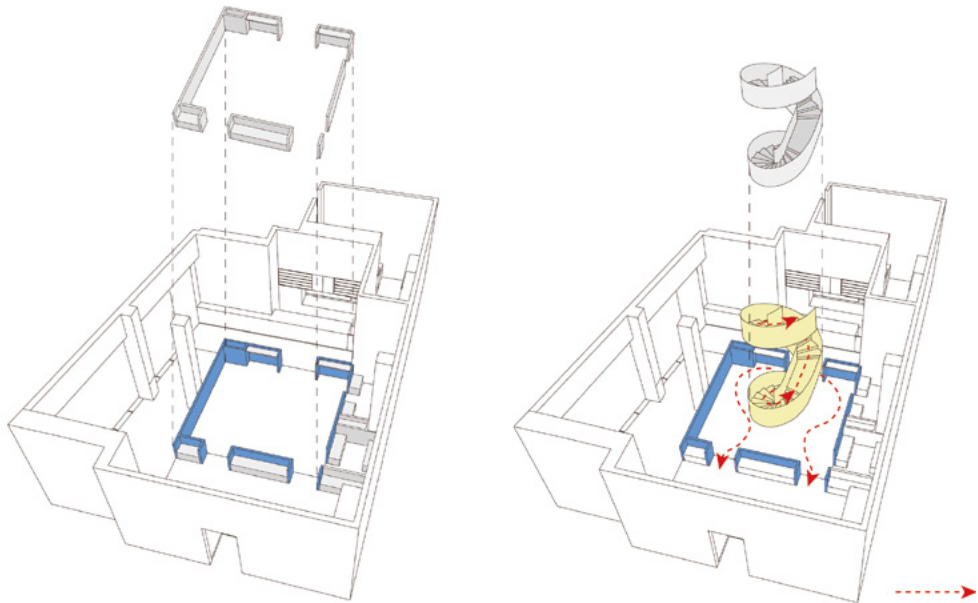
Three things make architecture possible: a location, which is the premise of the architectural existence; geometry, which is the foundation and bones of a building; and nature, by which I mean the artificialized nature instead of the primordial one.

—Tadao Ando.

Located in Haiyan County, Jiaxing, the two-storied building titled “Farewell, Lass” is positioned as a coffee shop for women, which is manifested in the design through the element of curves chosen by the architect after long consideration.

On the façade is painted the theme color—purplish blue. Every woman must bid farewell to her girlhood. The brand is designed to embody women’s idiosyncrasies while staying loyal to their souls, and the corresponding space is intended to reflect how a girl metamorphoses to be a fully grown woman. The patio linking the two stories enlivens the space and adds a touch of fun. On the first floor, an enclosed courtyard is created with linear partitions. The space, which is at once isolated and connected, is imbued with a sense of community, and the functioning borders trigger a sense of belonging. In the middle is the white spiral staircase. Looking like a sculpture, it’s serene and independent, constituting the soul of this space.

The architectural concept can be best explained through a Chinese saying: ‘Demure as a maiden and quick like an escaping rabbit’. Linear light and the checkered floor in black and white jointly provide the special logic and sensibilities. The kaleidoscope of light and shade in days and nights is made possible by the combination of artificial and natural light, which, filtered through the blinds, flow in tempo with the changing light of the day.



01 /



01





02 /  
03 /  
04 /



02

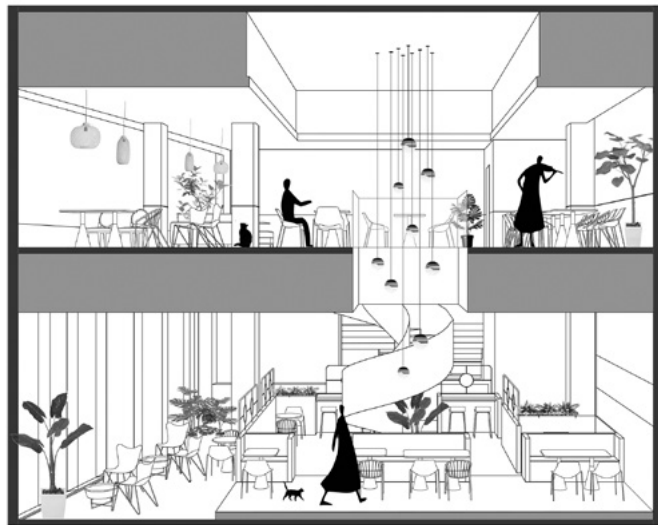


03

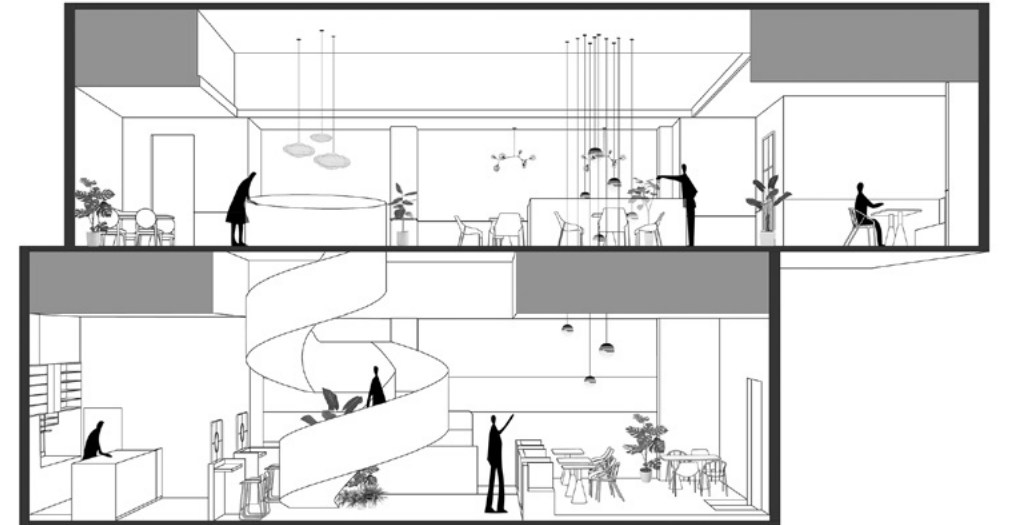


04





05 /  
06 /  
07 /  
08 /



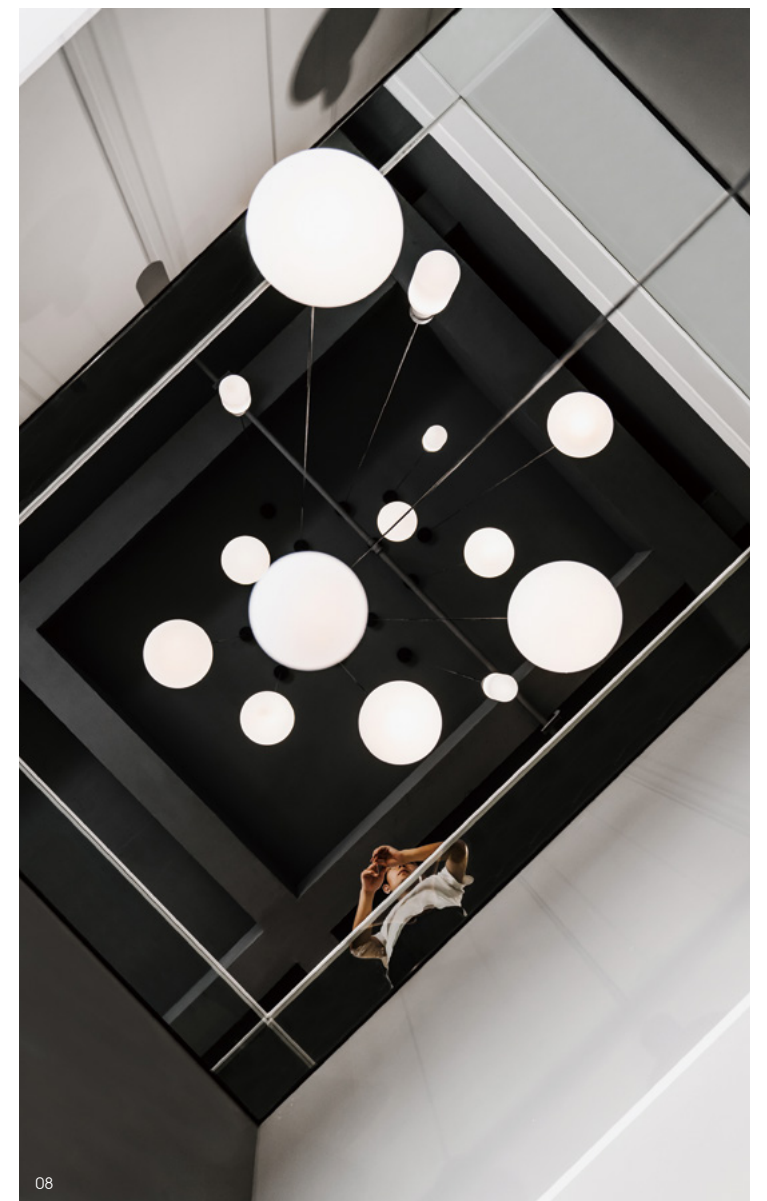
05



06



07



08